

We Mean Break Even

Your Data
Your Decisions
Your Money



14283 South 2000 Road
Nevada, MO 64772
417-667-0220

Record Harvest Select

*** 3 year commitment

- 33% discount off of
 - *Crop Removal
 - * Variable Rate
 - *Seeding and
 - *Nitrogen
- 10% Discount off of soil sampling
- 10% Discount off of Record Harvest hardware (Some exclusions may apply)

Record Harvest Agents are committed to providing Return on Investment using your agronomic data.

Included in the package:

- *Monitor Prep
- *Crop Budget- Ready for your banker
- *Plant Maps-AgX Compliant- Crop Production Reports
- *Weekly Imagery
- *Visual Scouting Trap Network and Weekly Report
- *Harvest Maps- Crop Production Reports
- *Marketing Report
- *Farmobile Data Store- We supply 1 Puc per 2500 Acres
 - **If you run two combines, you need two Pucs
- *Guaranteed \$2.00 per Acre Pay out for 2018
 - **Combine must have yield monitor



Collect



Share



Sell

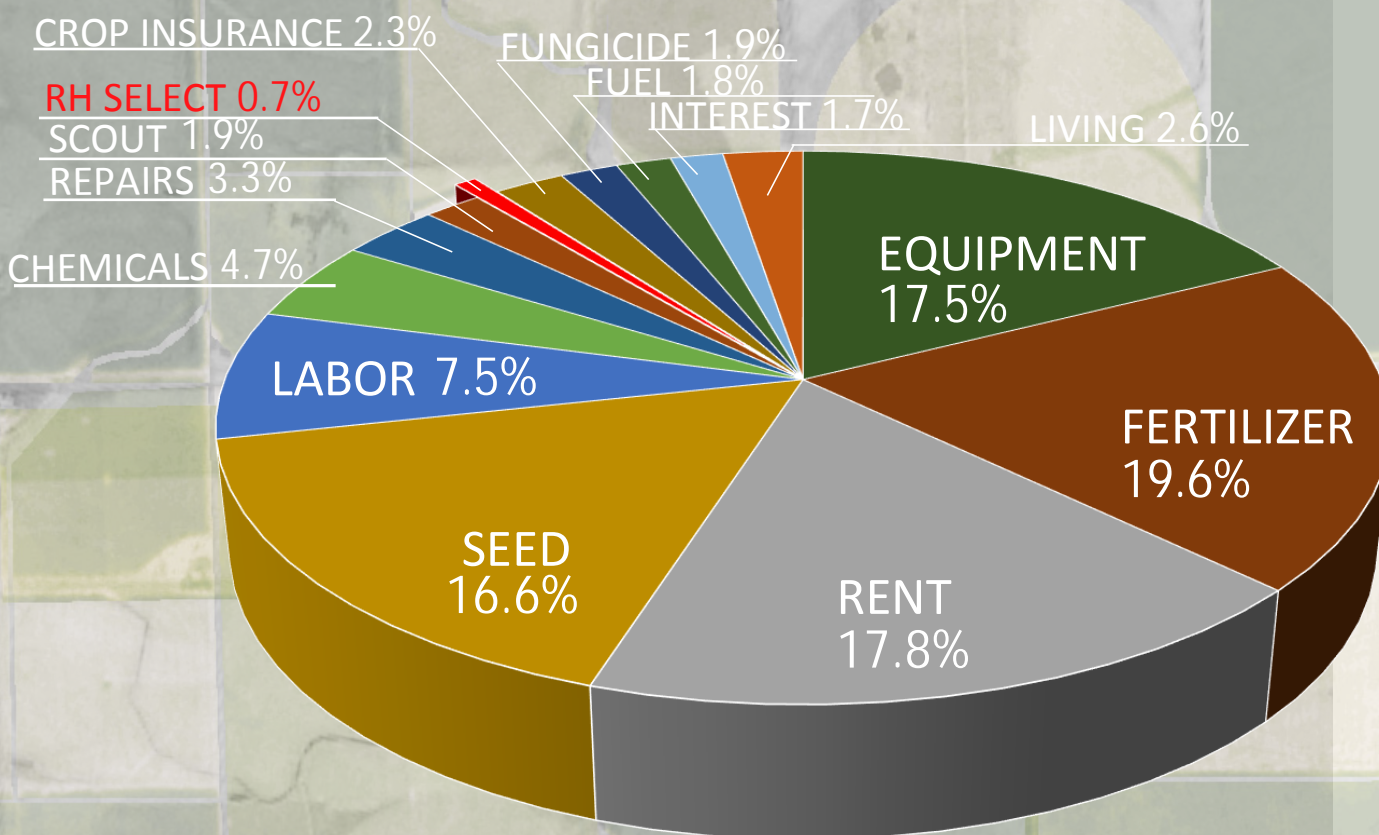
We believe that focusing on the basics and managing things that are in your control will provide an improved ROI.



Winter Planning - Crop Budgeting

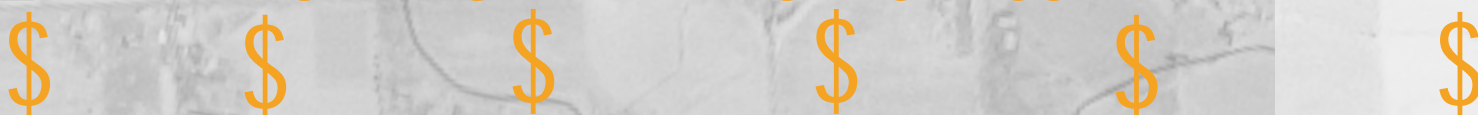


Record Harvest will provide a generic crop budget for your operation. We believe this is the most important piece of every operation in today's market.



DID YOU KNOW THAT your Record Harvest Select Account is less than 1% of your total expenditures, but yet has the tools and knowledge from your precision components to assist in providing ways for you to save 1, 2, or 5% off other expenditures in your operation.

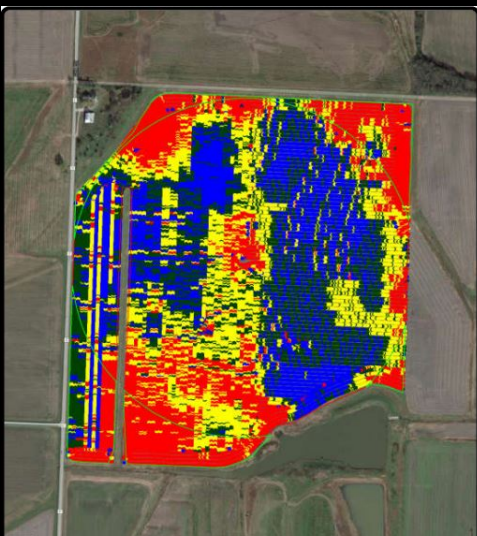
SETTING A PLAN BASED ON YOUR DATA



Spring into Action - Spring Planting



Your planting maps provide ROI in many ways. Providing crop insurance, scouts, or other team members necessary information from your fields to make more accurate decisions, as well as being data compliant with Farmobile to sell your data.



Population Legend

Rate (Count)
(ksds/ac)

■	32.47 - 166.50 (36.07 ac)
■	31.09 - 32.47 (36.69 ac)
■	29.50 - 31.09 (36.70 ac)
■	0.86 - 29.50 (36.05 ac)



Population Legend

Product Name

■	6127A3 (72.78 ac)
■	DKC61-88 (72.73 ac)

DID YOU KNOW THAT your Record Harvest Select Account is less than 1% of your total expenditures, but yet seed costs are approximately 13%



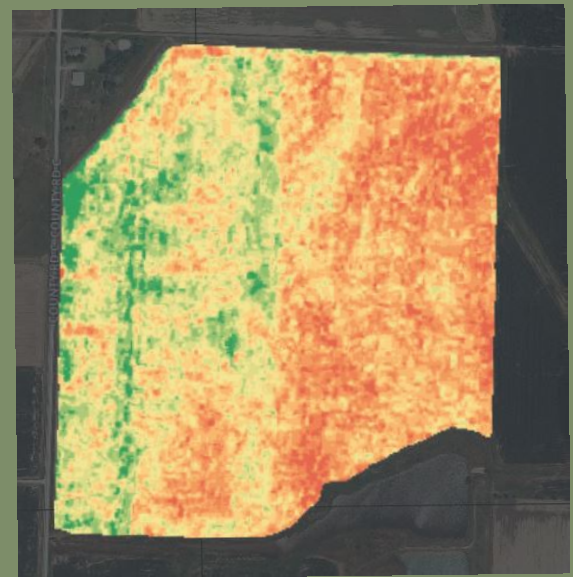
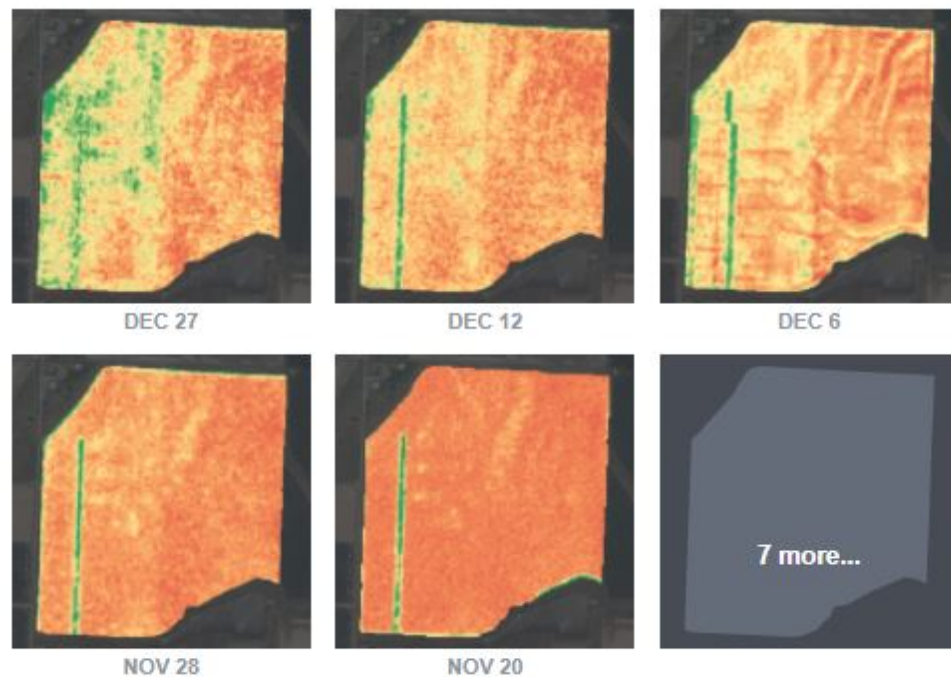
"A great example is capturing the seed hybrid/variety planted in a field is a 10 second action with multiple year value. Guess what most as applied field records lack? Correct, no seed hybrid/variety!" -Kip Pendleton via LinkedIn

Moving Forward - Eye in the Sky



Record Harvest will provide a weekly crop health image of each of your fields via the Farmlogs platform. This knowledge will provide value to you and your trusted advisors.

FROM LAST YEAR

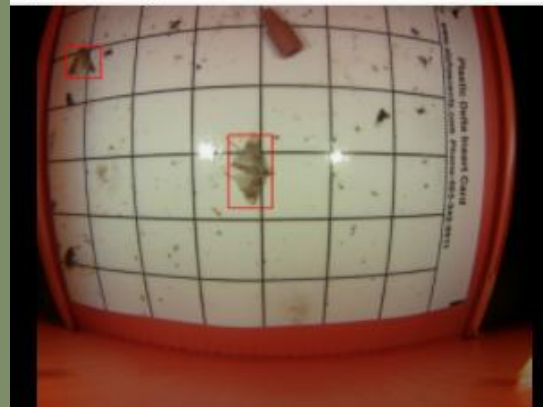


DID YOU KNOW THAT your Record Harvest Select Account is less than 1% of your total expenditures, but yet most drone or aerial images cost 1% per flight or image.

CAPTURING YOUR DATA

Summer - Eye in the Sky provides a Bug Trap

September 26, 2017

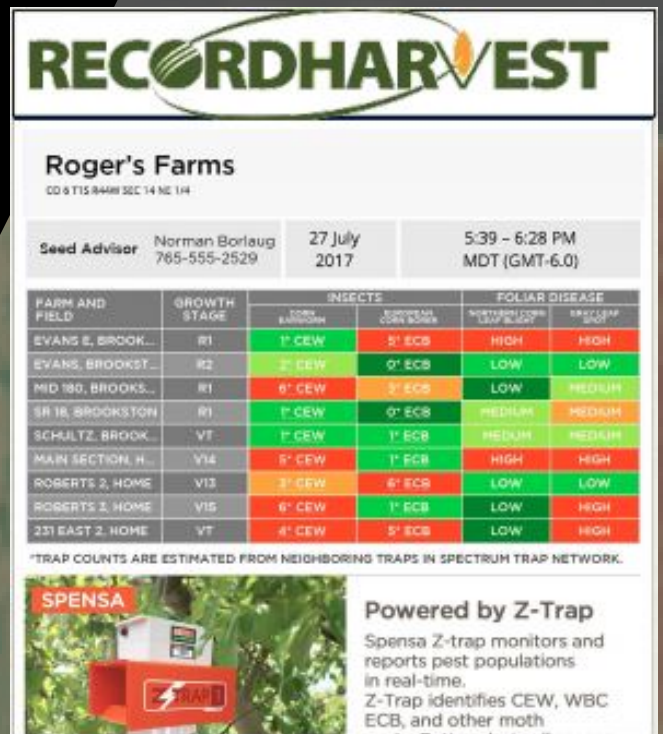


Record Harvest provides a network of bug traps to help you keep track of pests in your operation. By knowing your operation we can strategically position a network of traps that you will have access to. This will help you be more aware of your surroundings so that your decision making is active rather than reactive. We believe that our knowledge of your data will provide value to your trusted scouts.

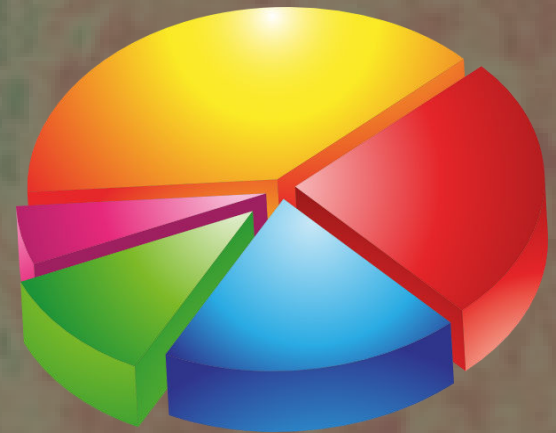
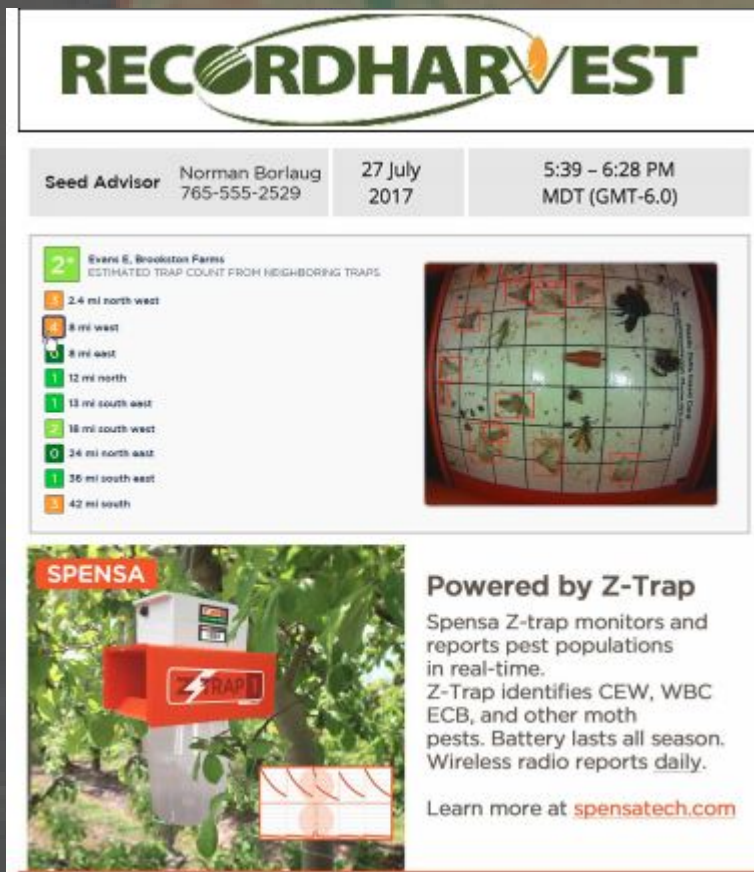
DID YOU KNOW THAT your Record Harvest Select Account is less than 1% of your total expenditures, but insecticides push 3-5%, which may or may not be needed.



Summer Bugs Provide a Story



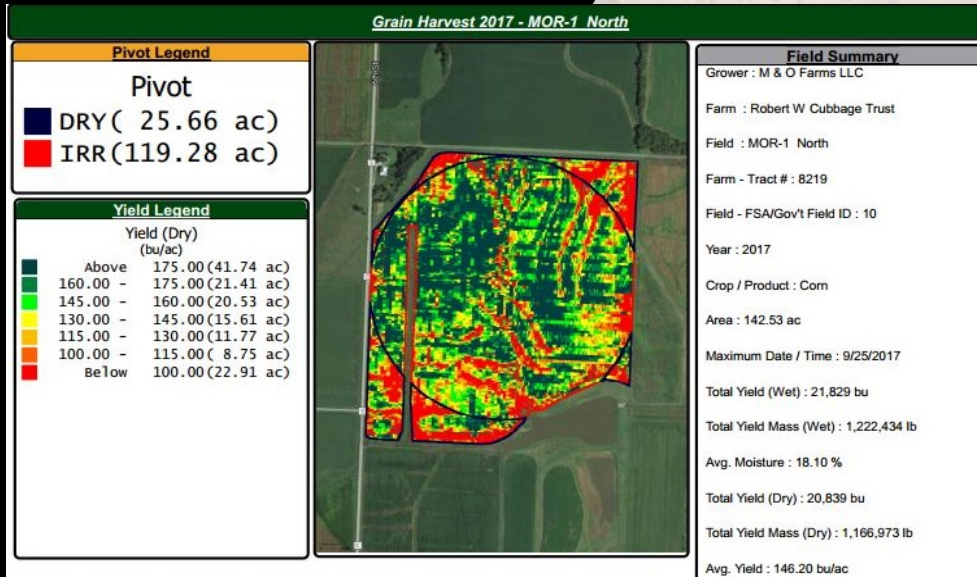
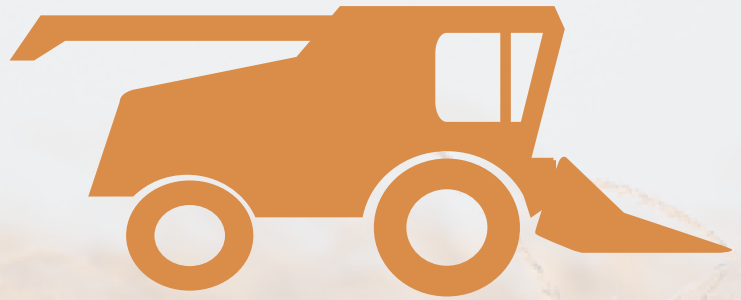
Record Harvest provides a customized network report on a weekly basis to give you ample warning so that you can make decisions regarding pesticides and fungicides for your operation.



DID YOU KNOW THAT your Record Harvest Select Account is less than 1% of your total expenditures, but the Spensa network has more timely information than your trusted scout whom is about 2% of your expenditures.



Forward to Fall- Let Yield Tell the Story



Your harvest maps provide ROI in many ways. Providing crop insurance, scouts, or other team members the necessary information from your fields to make more accurate decisions, as well as being data compliant with Farmobile to sell your data.

DID YOU KNOW THAT your Record Harvest Select Account is less than 1% of your total expenditures, but yet the harvest map is arguably the most important input in your crop budget because it provides the information needed to figure your ROI and gain more value.

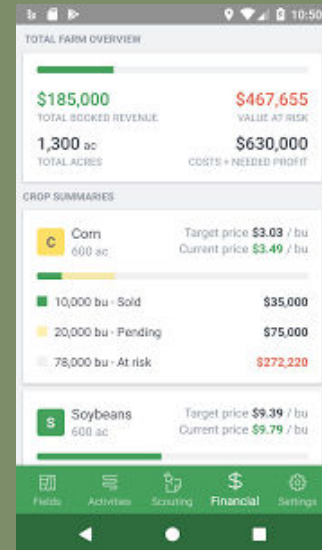
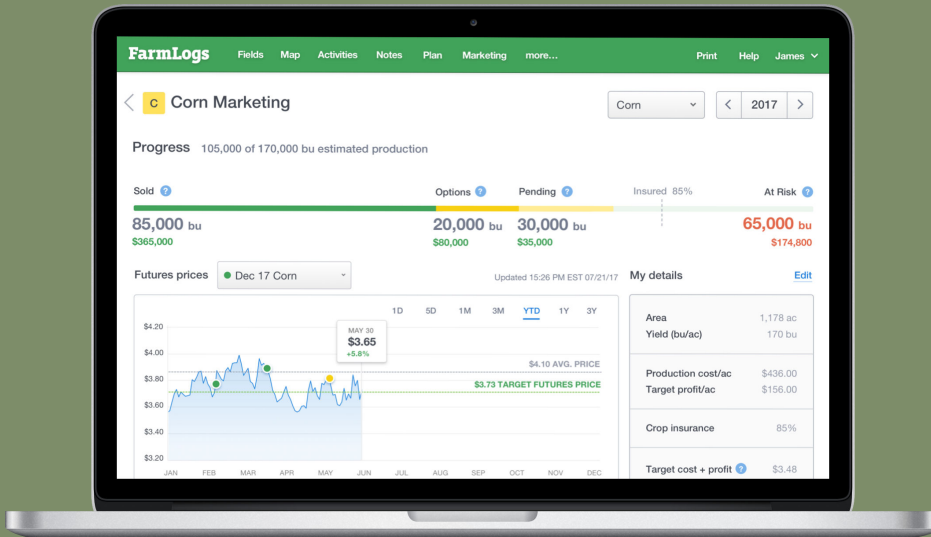


"Or yield monitors not calibrated at harvest, this takes 15 minutes and it improves your harvest and your knowledge- Don't do it and you are left guessing and measuring grain bins." -Kip Pendleton via LinkedIn

Fall to Winter- Find your ROI



Record Harvest provides a crop marketing plan based on past product history giving you the tools to fine tune and monitor grain sales based on a known break even on your operation providing additional Return on Investment.



DID YOU KNOW THAT your Record Harvest Select Account is less than 1% of your total expenditures, but yet a \$0.10 shift in the corn market on 1,250 acres of corn at 150 bushel is a 3% loss or profit?



8 THINGS TO KNOW ABOUT RECORD HARVEST

1. Created in 1999 with the vision of data, and data ownership, but by default became a hardware company.

2 In a market full of start-ups, we are still loyal to our beginnings with utilizing AgLeader and SST Software just like we did in 1999.

3 Record Harvest has assisted 1,225 Grower operations including Hardware and Data Services.



4 Record Harvest was started by farmers and continues to have a high percentage of employees that are farmers.



5 We offer products that we believe are the best in the industry and that will provide ROI.



6 We have over 12,000 fields in our system, and are pushing a million managed acres since 1999.



7 With a strong Agriculture background and combined experience of over 98 years on staff Record Harvest continues to serve diversified farmers in the Midwest.




8 Data is the way of the future. It's your data and we are focused on finding ways for you to profit from your data today.

PRECISION PRICING




MAPPING

	Precision Plant = Mapping + Crop Summary Reports	\$0.35 / Acre
	Precision Apply = Mapping + reports (Up to 4 field operations per crop year)	\$1.00 / Acre
	Precision Harvest = Mapping + Crop Summary Reports	\$0.35 / Acre
	Precision Harvest Reports = Yield by Reports up to 3 Individual Analyses	\$0.50 / Acre

VARIABLE-RATE SEEDING - VRS


EC SOIL MAPPING

TOPOGRAPHY AND WATER MANAGEMENT

	Precision Seed = Variable-rate seeding prescription***	\$1.50 / Acre
	Crop Removal = Nutrient Replacement off of Actual Yield Map ***	\$1.50 / Acre
	EC Collect = Field data collection + basic maps	\$7.00 / Acre
	Topo Collect = Field data collection + basic maps	\$5.00 / Acre

*** Requires Precision Harvest at \$.35 acre to load previous years yield data

PRECISION SERVICES

	Precision Prep = Monitor setup, does not include on-farm service call	\$0.25 / Acre
	Precision Boundary = Onsite field boundary collection	\$.01 / Foot
	Precision Guide = Autosteer guideline management	\$ 95/Hour
	On Farm Visit = Install Monitor Prep, Collect Planting and Harvest Data	\$100 / Trip

STANDARD SOIL SAMPLING LEVELS (THESE PRICES ARE BASED UPON ELECTRONIC DELIVERY ONLY.)

CRITERIA	Turnkey Grid & Data Package		Soil Lab & Data Package		Data Processing Only Package
	PER ACRE COST		PER ACRE COST		PER ACRE COST
GRID SIZE	Basic Test	Basic + S + Zn	Basic Test	Basic + S + Zn	\$3
2.5 ACRE GRID	\$9	\$10	\$6	\$7	\$3
5.0 ACRE GRID	\$8	\$9	\$5	\$6	\$3
10+ ACRE GRID	\$7	\$8	\$4	\$5	\$3

ZONE SAMPLING

CRITERIA	Turnkey Zone & Data Package		Zone Creation, Soil Lab & Data Package		Zone Creation & Data Processing
	PER ACRE COST		PER ACRE COST		PER ACRE COST
	\$7.50/A + \$7.50 Sample (Basic Test)	\$7.50/A + \$10.00 Sample (Basic + S + Zn)	\$4.50/A + \$7.50 Sample (Basic Test)	\$4.50/A + \$10.00 Sample (Basic + S + Zn)	\$4.50/A

CROP REMOVAL / RX REPROCESSING FEE = \$1.50 / PER ACRE

Complete your Precision Profile we'll send you a **FREE** preliminary outline of a 4-year Precision Plan to fit your farm.

Farm Name	
Owner / Manager	
Address	
Email	
Cell Phone	
Total Crop Acres	

Type of Farming Practices: ☐ Conventional Till ☐ Minimum Till ☐ Strip-Till ☐ No-Till

Do you currently implement GPS grid-soil sampling on your crop acres? ☐ Yes ☐ No

Do you currently implement variable-rate fertilizer practices for your crop nutrient needs? ☐ Yes ☐ No

Is your planter currently capable of GPS mapping seed varieties and population? ☐ Yes ☐ No

If answer is Yes then please select brand of planter monitor:

☐ John Deere ☐ CNH ☐ Ag Leader ☐ Precision Planting ☐ Kinze ☐ (Other)

Does your planter currently have variable-rate (VRT) technology? ☐ Yes ☐ No

Is your combine currently capable of GPS mapping yield and moisture? ☐ Yes ☐ No

If answer is Yes then please select brand of monitor:

☐ John Deere ☐ CNH ☐ Ag Leader ☐ Precision Planting ☐ Kinze ☐ (Other)

Do you or your commercial applicator have the ability to GPS map your input applications such as herbicides, insecticides and fungicides? ☐ Yes ☐ No

If answer is Yes then please select brand of monitor primarily used:

☐ Raven ☐ John Deere ☐ Ag Leader ☐ Dickey John ☐ CNH ☐ (Other)

Do you currently have someone who manages data or does precision mapping for you? ☐ Yes ☐ No

If answer is Yes then please select category of who is your primary precision data service provider?

☐ Seed Dealer ☐ Fertilizer Dealer ☐ Implement Dealer ☐ Precision Hardware Dealer ☐ Agronomist ☐ (Other)

Do you currently have any historical precision data that you have collected such as yield data, planting data, fertility data, etc? ☐ Yes ☐ No





Dropbox



Farmobile



SST Viewer



AgFiniti



Farmlogs



Spensa



OPI



Midwest Laboratories



AGRIBLE®

Agribile



MyJohnDeere



Encirca



Farmer Business Network



Climate



ADM Farmer View



TeamViewer



Record Harvest Store



Amazon



MyAgCentral



Weather Underground

Your Record Harvest Agent will assist in setting up your online Headquarters to access your information.

www.recordharvest.com

Vendors Select

RECORDHARVEST

Ag Leader[®]
Technology

Yetter
FARM EQUIPMENT

OPI **integris**
Advanced Grain Management

RAVEN

Precision
PLANTING[®]

CRARY
PRO
TILE[®]

360 **YIELD**
CENTER[™]

XMC
Next Generation Machine Control



CFC Distributors, Inc.
Performance * Price * Service
800.548.6633

Vendors Select Exempt

DAWN[®]

Ag Focus[®]

Trimble[®]
Authorized Dealer

MonTag